





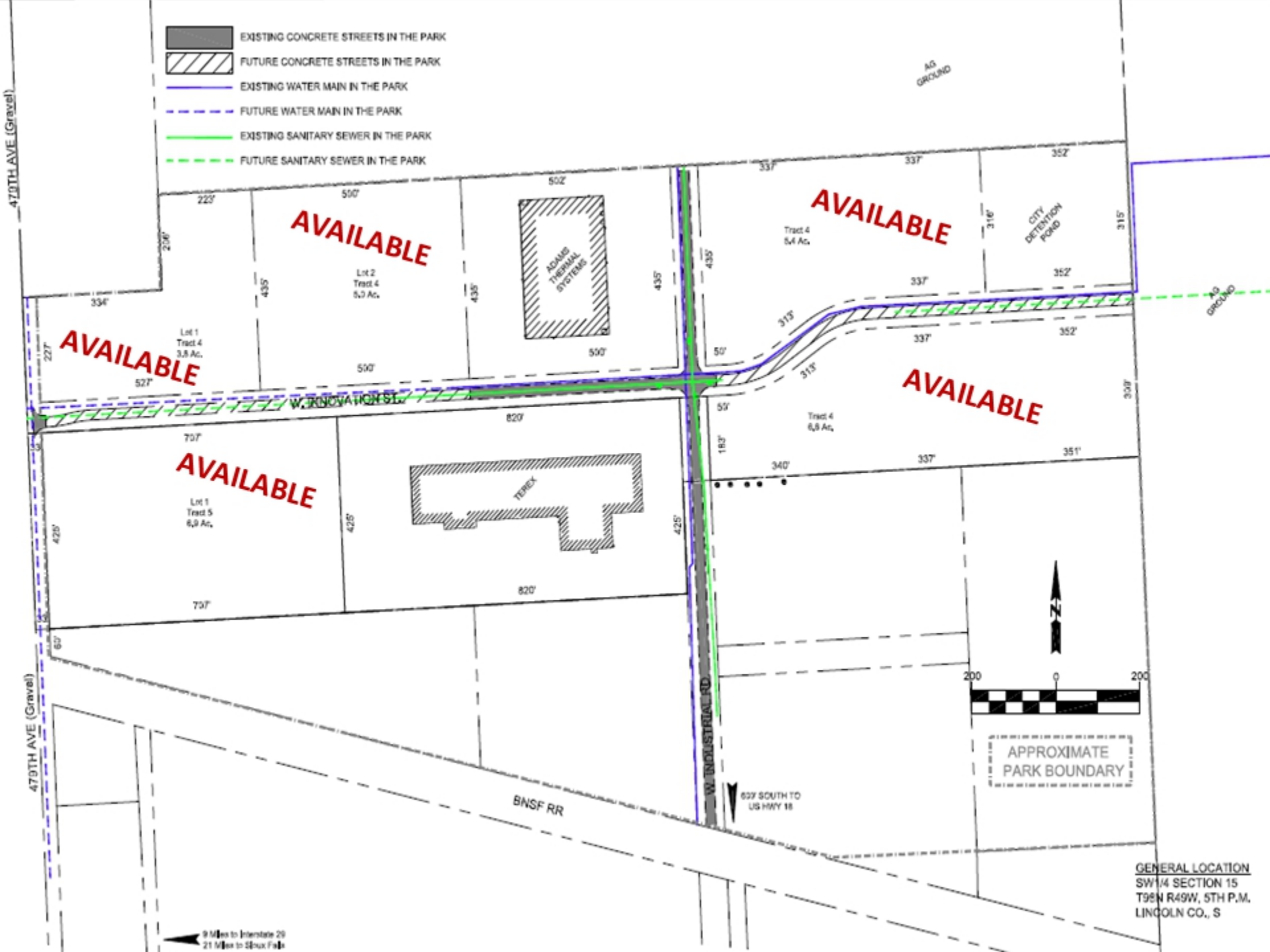


-  EXISTING CONCRETE STREETS IN THE PARK
-  FUTURE CONCRETE STREETS IN THE PARK
-  EXISTING WATER MAIN IN THE PARK
-  FUTURE WATER MAIN IN THE PARK
-  EXISTING SANITARY SEWER IN THE PARK
-  FUTURE SANITARY SEWER IN THE PARK



GENERAL LOCATION
 SW 1/4 SECTION 15
 T95N R49W, 5TH P.M.
 LINCOLN CO., S